

25 New Barns Avenue, Chorlton, Manchester, M21 7DB



**JP&Brimelow**  
ESTATE AGENTS



# Offers In The Region Of £230,000




\*\*\*VIDEO TOUR AVAILABLE\*\*\* A spacious and well-kept, TWO DOUBLE BEDROOM, top floor apartment. Situated in a popular residential area, off Nell Lane in Chorlton. Within walking distance to the Metrolink tram stop on both Barlow Moor Road and St Werburghs Road giving you direct access to Manchester City Centre, Chorlton Park Primary School and Chorlton Park. In brief, the well-planned accommodation consists of a communal entrance hall with stairs leading to all floors, a private entrance hall leading to an inner hallway, a lounge/dining room with a bay window to the front aspect, a fitted kitchen, two double bedrooms, the principle benefitting from a three-piece en-suite shower room. Additionally, there is a three-piece bathroom suite completing this delightful apartment. The property benefits from gas fired central heating and allocated parking to the rear.







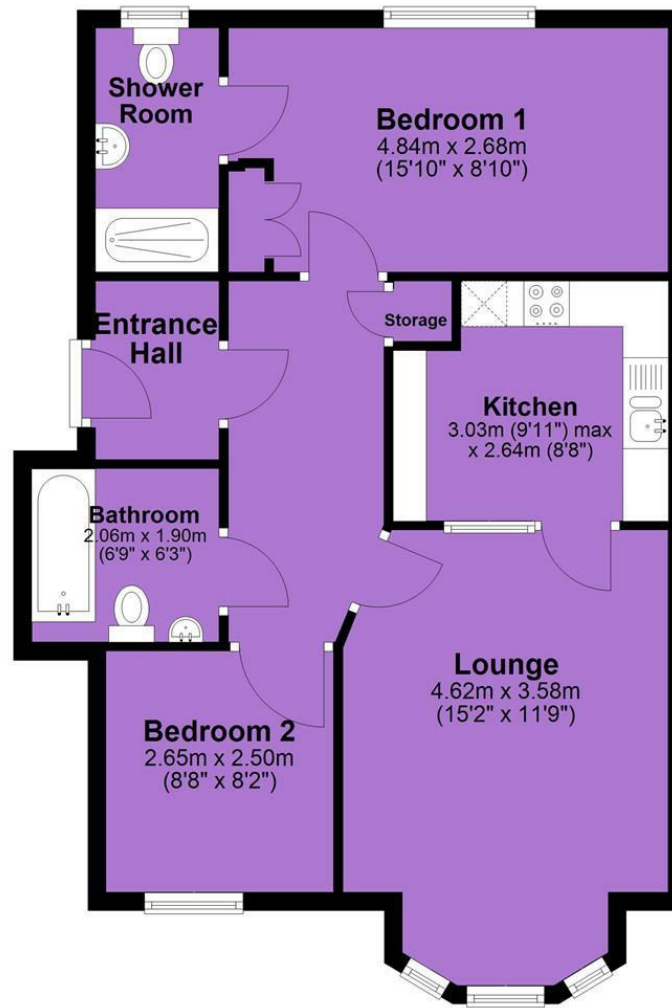
## EPC Chart

| Energy Efficiency Rating                           |         |  |
|--|---------|--|
|  | Current | Potential  |
| <i>Very energy efficient - lower running costs</i> |         |  |
| (92 plus) <b>A</b>                                 |         |  |
| (81-91) <b>B</b>                                   |         |  |
| (69-80) <b>C</b>                                   |         |  |
| (55-68) <b>D</b>                                   |         |  |
| (39-54) <b>E</b>                                   |         |  |
| (21-38) <b>F</b>                                   |         |  |
| (1-20) <b>G</b>                                    |         |  |
| <i>Not energy efficient - higher running costs</i> |         |  |
| England & Wales                                    |         | EU Directive<br>2002/91/EC  |



Tenure: **Leasehold** Council Tax Band: **B**

## Ground Floor



JP & Brimelow Estate Agents Ltd  
430 Barlow Moor Road, Manchester, M21 8AD  
Tel: 0161 8822233  
E: sales@jpbrimelow.co.uk www.jpandbrimelow.co.uk



**JP & Brimelow**  
ESTATE AGENTS

NOTICE: JP & Brimelow Estate Agents Ltd for themselves and for the vendors or lessors of this property whose agents they are give notice that:

- (i) the particulars are set out as a general outline only for the guidance of intending purchasers or lessees, and do not constitute, nor constitute part of, an offer or contract;
- (ii) all descriptions, dimensions, references to the condition and necessary permissions for use and occupation, and other details are given in good faith and are believed to be correct but any intending purchasers or tenants should not rely on them as statements or representations of fact but must satisfy themselves by inspection or otherwise as to the correctness of each of them;
- (iii) no person in the employment of JP & Brimelow Estate Agents Ltd has any authority to make or give any representation or warranty whatever in relation to this property.

jpandbrimelowestateagents

@jpandbrimelow